

Gateway to Language and Learning©

Joan Bruno, Ph.D., CCC-SLP

JoanBruno@CTR-NJ.com ***** www.gatewaytolanguageandlearning.com




A Tool for Achieving Communicative Competence Across the Lifespan

Joan Bruno, Ph.D., CCC-SLP
Communication Technology Resources

1

What is Gateway©?


- An AAC App that supports the communication needs of children, teens and adults with a range of user abilities
- A series of high-frequency *Core Word* page sets, each with focused fringe vocabulary, enabling novel message generation and effective communication at home, school and in the community.
- Efficiently organized page sets with an average # of keystrokes ≤ 1.5 per word
- A tool that supports language development and language use within functional contexts by use of *focused fringe vocabulary* and *Theme pages*.




2

**G
A
T
E
W
A
Y


P
L
A
T
F
O
R
M
S**



Tobii DynaVox
In-App Purchase for Snap+
• 7 Vocabulary Levels – Child Functional, Teen/Adult Functional, Developing Language, Advanced Communicator, Text, Pro, Scan Pro
• Grid sizes – 3*4, 4*6, 5*7, 5*9, 6*11, 8*11, 9*12, 10*14
• Available for Windows and iOS Devices




TouchChat
In-App Purchase for the TouchChat
• Child, Teen and Adult Pages
• 12, 20, 30, 40, 66, Pro,
• Integrated word prediction



Assistiveware
In-App Purchase for Proloquo2Go
5 Vocabulary Levels – Child Functional, Teen/Adult Functional, Developing Language, Advanced Communicator, and Text
Grid sizes – 3*4, 4*6, 5*7, 5*9, 6*11, 8*11, 9*12, 10*14

3




Page Set Paradigm

TouchChat


Learning Language	Language Impaired	Linguistically Competent
Child 12	Teen 20	Child 66
Child 20	Teen 30	Teen 40
Child 40		Teen/Adult 66
Child 66		Text 40
		Text 66
		Gateway Pro

www.gatewaytolanguageandlearning.com

4



Page Set Paradigm for Proloquo2Go and Snap




Child Functional	Teen/Adult Functional	Developing Language	Advanced Communicator	Text
3*4	3*4	3*4		
5*6	5*6	4*6		
5*7	5*7	5*7		
5*9	5*9	5*9	5*9	5*9
6*11	6*11	6*11	6*11	6*11
8*11	8*11	8*11	8*11	8*11
9*12	9*12	9*12	9*12	9*12
10*14	10*14	10*14	10*14	10*14


www.gatewaytolanguageandlearning.com

5

Who Can Use Gateway©?

- A person who ...
- can categorize words according to people, actions, places, objects,
- is beginning to create single word messages,
- has the potential to develop age appropriate syntactical performance,
- uses complex sentence structure,
- has a need to express novel thoughts and ideas
- has the potential to develop functional literacy skills





6

How is Gateway© Organized?



- High frequency **Core Word** MAIN page organized in a Fitzgerald Key format with Category folders branching to **focused fringe vocabulary**.
- **SCHOOL** or **COMMUNITY** folder helps focus “fringe” vocabulary folders for the communicative context
- “**My Themes**” folder that links to predictable and activity-based vocabulary
- **DICTIONARY** folder for quick access to fringe vocabulary
- **Symbol page** sets for young users or those who need or prefer symbols and **Text page** sets for literate users who prefer a text-based approach.
- Option to select a **Developmental Progression** model or **Advanced** grid size – hide buttons to simplify



7

What is the Fitzgerald Key?



- Fitzgerald Key
 - Language learning approach initially designed to teach language *structure* to deaf individuals
 - Format mirrors simple declarative sentence
 - Similar to the approach young children intuitively use to categorize their world
 - Color-coding utilized

Who-Verb-Little words-Words that tell-What-Where-When

8

Fitzgerald Key



- **Who - (possessive, plural)**
 - People
 - Family
 - Community Helpers
 - Pronouns
- **Verbs - (-s, -ing, -ed)**
 - Auxiliaries, models, actions
- **Little words**
 - Articles,
 - Prepositions
 - Conjunctions
- **Words that tell (-er, est)**
 - Adjectives
 - Adverbs

9

Fitzgerald Key (con' t)



■ **What (-s)**

- Things
- Foods
- Household
- Animals
- Body Parts

■ **Where (-s)**

- Places
- Inside
- Outside

■ **When - Time Words**

- Months, Days, Holidays,
- Other Time related Words

10

Effective Communication



- Part #1 – Ability to say what you want to say, when you want to say it.
- Appropriate Vocabulary Selection
 - Large and diverse core vocabulary
 - Academic vocabulary
- Enable “Real Time” spontaneous conversation across environments – home – school - community

11

What is Core Vocabulary



- **Core vocabulary** is a small set of simple words, in any language, that are used frequently and across contexts (Cross, Baker, Klotz & Badman, 1997).
- **Core:** the choicest or most essential or most vital part of some idea or experience
- **Shared “Core”**
 - have, want, go, I,
 - Is “eat or drink really core”
- **Individual “Core”**
 - Chips, pretzel, noisy

12

Effective Communication Gateway

- Part #2 – Create Messages With a Minimum Amount of Effort
- Minimize Cognitive demands of symbol identification/recognition
- Improved access
- Access each word with an average of ≤ 2 key selections per word

13

TouchChat Keystroke Comparison



Sentence	# of Wds	# of Key Selections	
		Gateway 40-Child	Gateway 66-Teen/Adult
I want to go outside.	5	5	5
I don't want to go to school.	7	9	8
Can you help me?	4	7	6
Will you read to me?	5	8	6
I am going to play baseball.	6	6	8
I forgot to do my homework.	6	13	11
I love to eat ice cream.	6	7	6
What are you going to eat?	6	8	7
Do you have it when you go to school?	9	13	12
Yesterday I went swimming.	4	8	8
Total Number of Words	58	84	77
Avg. Number of Keystrokes		1.44	1.32

14

Proloquo2Go and Snap Gateway Keystroke Comparison



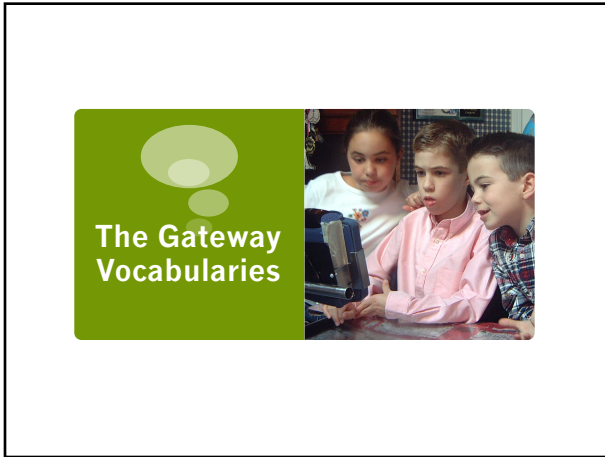
Developing Language

Advanced Communicator


Message	# Words	Key Selections			
		5/9	6/10	8/11	10/14
We are going to eat chicken.	6	10	9	8	6
Can you help me?	4	7	5	5	5
I want to go to the mall.	7	7	7	5	5
Yesterday they helped me with my computer.	7	12	11	11	10
I want to get my sister a present.	8	10	10	10	8
Will you give it to me?	6	11	7	7	7
What do you want me to do?	7	9	9	9	8
She has to work tomorrow.	5	8	7	6	6
Total Spoken Words - Hits	50	74	66	62	56
Avg. # Keystrokes Per Word		1.48	1.32	1.34	1.16

Message	# Words	Key Selections			
		5/9	6/10	8/11	10/14
We are going to eat chicken.	6	8	8	8	6
Can you help me?	4	6	5	5	4
I want to go to the mall.	7	6	7	6	6
Yesterday they helped me with my computer.	7	12	11	11	10
I want to get my sister a present.	8	10	10	10	9
Will you give it to me?	6	9	6	6	6
What do you want me to do?	7	8	8	8	8
She has to work tomorrow.	5	7	6	4	4
Total Spoken Words - Hits	50	67	61	59	53
Avg. # Keystrokes Per Word		1.34	1.22	1.18	1.06

15




16

Gateway: A Tool to Support Language Development 

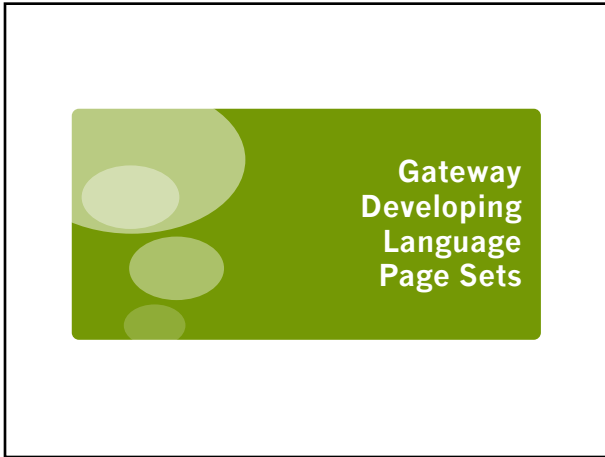
<p>Normal Language Development</p> <ul style="list-style-type: none">■ Speak single words■ Combine words to form 2-word utterances■ Begin to add word endings■ Novel telegraphic sentences■ Complex novel sentences■ Develop functional conversational skills	<p>Gateway Vocabulary</p> <ul style="list-style-type: none">● Core word vocabulary enables a child to develop language according to normal sequence● Vocabulary and morphology features account for developmental needs and abilities● User able to create simple to complex novel sentences
---------------------------------------------------------------------------------------------------------------------------------------------------------------------------------------------------------------------------------------------------------------------------------------------------------------------------------	-------------------------------------------------------------------------------------------------------------------------------------------------------------------------------------------------------------------------------------------------------------------------------------------------------------------------------------

17

Not All Children Require a Developmental Model 


- Approaches
 - Picture Exchange Communication System (PEC)
 - Applied Behavioral Analysis (ABA)
 - Language Acquisition through Motor Planning (LAMP)
- Limited Needs, Wants Interests
- Limited Social Interaction
- Functional
- Core and Fringe

18



19


Targeted Users



- Children developing language following a “typical course”
- Communicate using a range of 1-3 word telegraphic sentence to syntactically correct sentences
- Benefit from efficient (1.5 hits per word) and rich core-word page set
- Benefit from word endings, articles and prepositions
- May have spelling and reading among goals and/or abilities
- Benefit from pages promoting use in school, leisure and w/in the community.

20

Learning Language Page Sets



- These page sets provide a powerful *solution for children* learning to:
 - Create simple to complex sentences
 - Improve pragmatic language performance
 - Demonstrate mastery of core curriculum competencies
 - Communicate in a range of communicative contexts

21

Features of Language Learning Page Sets?



- Core Single Word Vocabulary and Theme Pages
- Sentence Development Links
- "Semantic Power Strips"
- Opposite Strategy for "Descriptive Words" (Compass & TouchChat)
- Incremental Use of Word Morphology Features (e.g., -ing, -ed,)
- Features Complement Language Arts Goals and Competencies
- Organization Enables Classroom Participation
- Expressive Language Testing
 - Performance can be measured using the Preschool Language Scale
 - Can score up to 35 months w/ Gateway 20
 - Can score up to 72 months on PLS-4 w/ Gateway 40

22

Theme Pages – Support Pragmatic Language Development



- About Me
 - Basic Information about the user
- Time to Chat
 - Range of Pragmatic Functions
- Time to Learn
 - Circle, Community Helpers, Meal Chat and Months
- Time to Play
 - Variety of leisure activities to support language and literacy development
- Time in Town
 - Activity page sets for community instruction and integration

23

Gateway
Advanced
Communicator
Page Sets

24

Advanced Communicator



- Individuals with good linguistic skills and advanced expressive language abilities.
- Communicates using a range of 5-6 word sentences to syntactically correct sentences
- Use or have the potential to use word endings, articles and prepositions, etc.
- Spelling and reading are among goals and/or abilities
- Benefits from Tabs with topical vocabulary to enhance participation in focused environments.

25

AAC Needs for Linguistically Competent Communicator



- Effective Communication
 - To be able to say what you want to say when you want to say it
- Efficient Communication
 - To be able to say what you want to say with a minimum amount of effort

26

How Does Gateway Support Efficient and Effective Communication?



- High frequently vocabulary is included in the "Core Vocabulary"
- Utilization of Features to Reduce Keystrokes
 - Efficient access to Core vocabulary
 - "Dynamic Morphology"-
 - Semantic Power Strips
 - Spelling w/ Word Prediction + Category Folders
- Minimize Cognitive Demands
 - Single meaning symbols
 - Tabs for contextual communication
- Access to the spelling and word prediction

27

What is Dynamic Morphology ? Gateway

- Present Progressive
 - Auxilliary (am, is, are, was, were) => verb + ing
- 3rd Person Singular
 - He, she, it, etc. = > third person singular (e.g, he goes)
- Infinitive Form
 - For the verbs - need, want, try, have, got etc., the verb label changes to the infinitive verb form. Want => to see, to be, etc.
- Object Pronouns
 - For prepositions to, with, by, etc., subject pronoun becomes object pronoun (e.g., he => him; she => her, etc.)

28

Dynamic Morphology Examples Gateway

Are you | I have

She | He was drinking coffee with

29

Advanced and Text Phrases Gateway

Back	Comments & Questions	Phrases	Academics	Community	Menu
Could you please?				Spell	
When you have time?					
Please get me some?					
Could I have?					
I'd like to					
Please check my?					
I want to					
I don't want to					
Please help me with?					
Are there any?					
I have a question about?					
What kind of?					Clear

30

Spelling Page

31

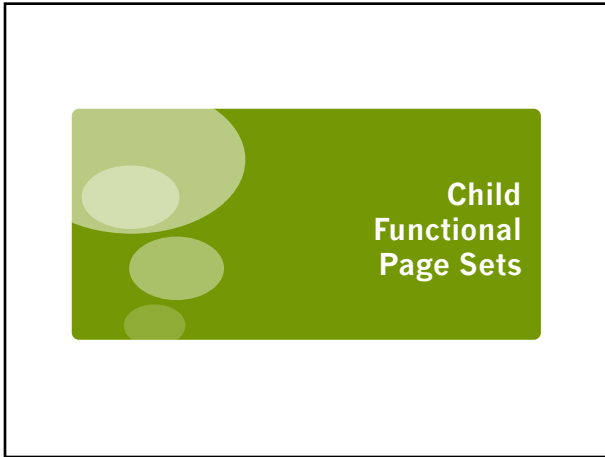
Text Pages

I want


32

Sample Text

33




34

Child Functional Page Sets 

- These page sets provide a powerful **solution for children w/ ASD** learning to:
 - Make requests and comments
 - Form simple to complex messages
 - Improve pragmatic language performance
 - Actively participate in their educational program
 - Communicate in a range of functional activities

35

Features of Child Functional Page Sets? 

- High frequency Core and Fringe Vocabularies ranging from 12 to 140 buttons
- Functional Home and School MAIN pages including common preferred items and activities
- Theme Pages to support functional language development and use
- Use of Sentence Development Links
- Organization Supports LAMP principles
- Organization facilitates an easy transition from PECS
- Open pages support Classroom Participation

36

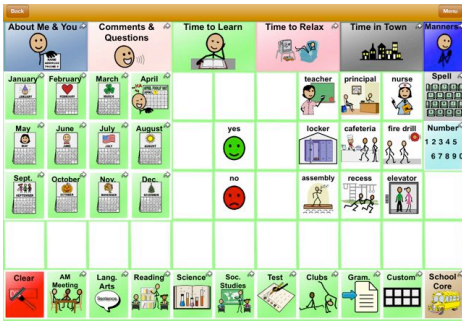
Theme Pages – Support Pragmatic Language Development



- About Me
 - Basic Information about the user
- Time to Chat
 - Range of Pragmatic Functions
- Time to Learn
 - Circle, Community Helpers, Meal Chat and Months
- Time to Play
 - Variety of leisure activities to support language and literacy development
- Time in Town
 - Activity page sets for community instruction and integration

37

Theme Pages



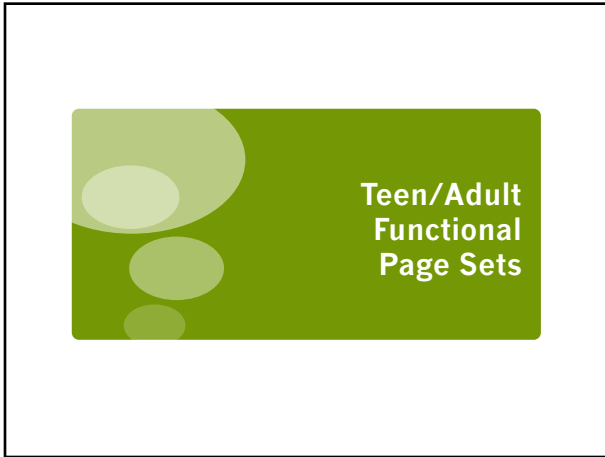
38

Expressive Language Goals and Activities




- Model use of common pictures to enhance language comprehension
- Help children use pictures/objects to talk about absent objects
- Stimulate the use of answers to open-ended ?s, focused questions, and single words in succession
- Provide opportunities to model and stimulate pivot-word utterances
- Play simple language-based games that promote use of telegraphic sentences

39




40

Child/Teen/Adult Functional 

- Emphasis on nouns (person, place or things), adjectives, verbs
- Minimal use of word endings and function words
- Use of *Sentence Development Strips* and functional vocabulary
- Folders to promote AAC in school, leisure and community

41

Targeted User 

- Individuals w/ ASD and other expressive language impairments
- Needs access to a functional core-word vocabulary
- Communicates using telegraphic messages; word order often impaired
- No use of grammatical markers, articles, prepositions, etc.
- May use PECS w/ "I want" sentence strip

42

Gateway to Language and Learning®

Joan Bruno, Ph.D., CCC-SLP

JoanBruno@CTR-NJ.com *****

www.gatewaytolanguageandlearning.com

What's in the Functional Vocabularies



- MAIN Page that includes high frequency core and action and sensory-based fringe words
- “Sentence Development Strips for eat, drink, wear, go, etc.
- “Semantic Power Strips” to enrich vocabulary
- Fitzgerald Key organization
- Tab Set to facilitate use of language in educational, recreational and community-based activities

43

Gateway® Resources



Manuals



Website – www.gatewaytolanguageandlearning.com



Facebook
<https://www.facebook.com/JoanBrunoGateway>



ebooks



44

Gateway®



- For further information
 - Website – www.gatewaytolanguageandlearning.com
 - Email – JoanBruno@CTR-NJ.Com
 - Facebook - <https://www.facebook.com/JoanBrunoGateway>

45